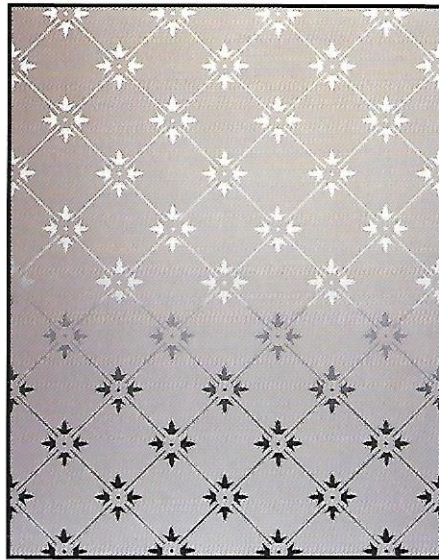
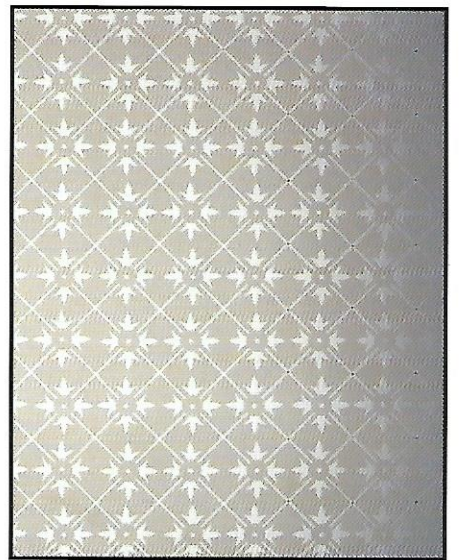


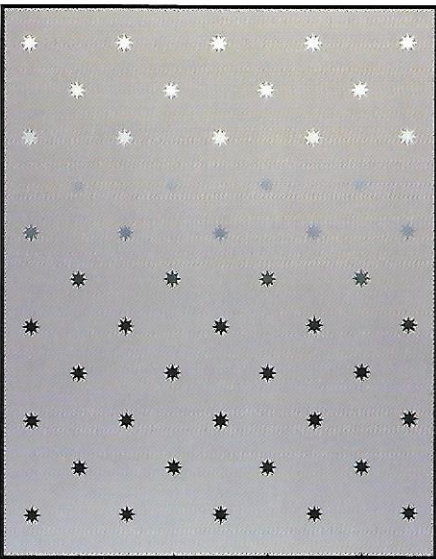
Fleur De Lys



Fleur



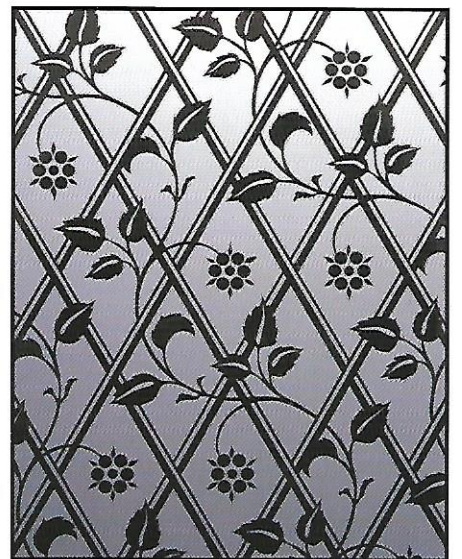
Double Fleur



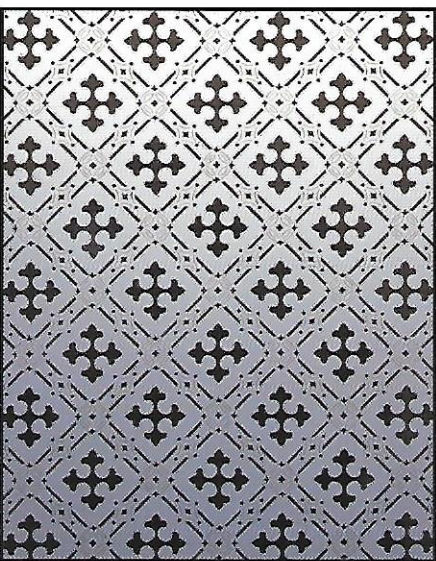
Star

TRADITIONAL
GLASS
PATTERNS

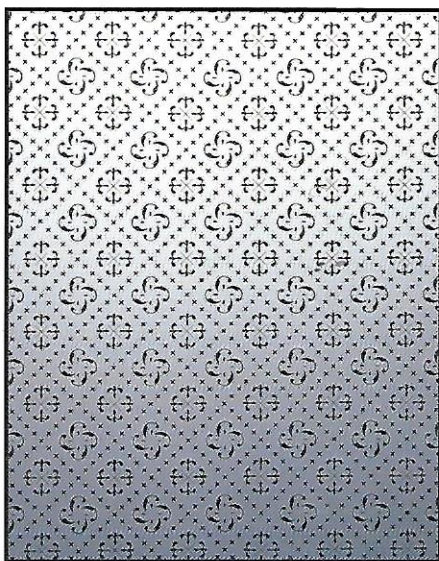
from
BARRON GLASS



Trellis



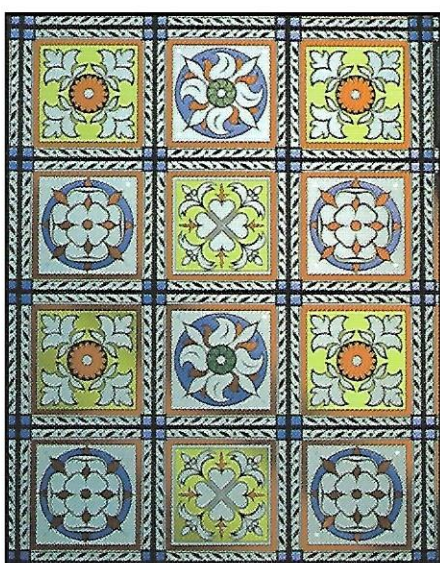
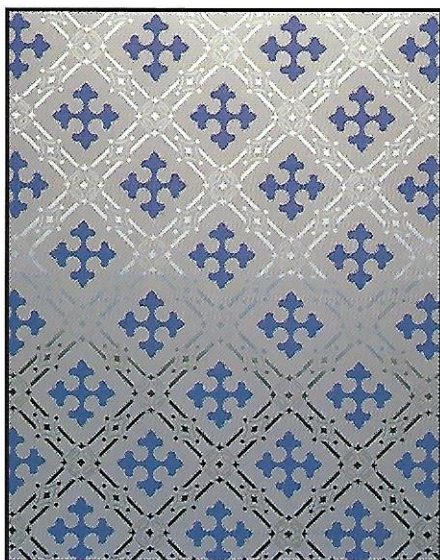
Gothic



Empress



Amber Fleur De Lys



Gothic

This pattern is faithfully reproduced from an 1840's original. This pattern is available in combinations of Etch-Blue, Etch-Green, Etch-Amber or plain Etch.

Victorian

A design based on leaded glass of the late Victorian period. The pattern is outlined in solid black enamel and shaded with Blue and Green enamels, Amber silver stain and Glass Etch. The design may be cut to size or used as is, or the squares may also be used individually in the 3" to 5" size range; the black lines around each square are 4" apart.

The glass designs illustrated here have either been faithfully copied from Victorian originals or are based on them. They are produced using materials and techniques of the period.

Our etch type glasses are produced using a process originally patented by John Davenport in 1806, where ground glass is fired onto the surface of the glass at high temperature to form an integral part of it and create a frosted appearance.

The process produces a well defined pattern with a slightly raised surface that is light fast and highly scratch resistant. These patterned glasses diffuse the light whilst providing a visual barrier. Our Double Fleur pattern with its two tone "etch" is suitable for applications requiring a total visual block.

The glass is produced to a sheet size of 1120mm wide by 2140mm high, then cut with the pattern centred to the appropriate size. The patterns are produced in 4mm as well as 5mm or 7mm laminate thickness.

The coloured glasses are produced by firing layers of transparent glass enamel onto the surface of the glass at high temperature, with the exception of Amber where its deep golden yellow colour is achieved by saturating the surface of the glass with silver oxide.

We recommend that the enamelled surfaces are installed facing away from sources of weathering and condensation. We also recommend that the enamelled surface is laminated internally for bathrooms where a high level of condensation is anticipated.

